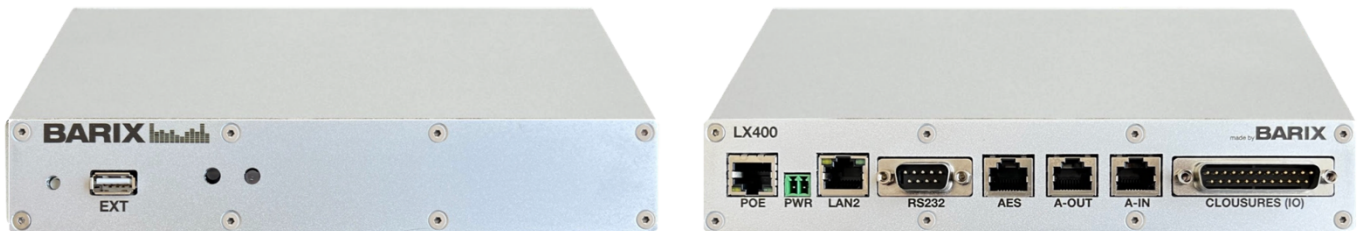


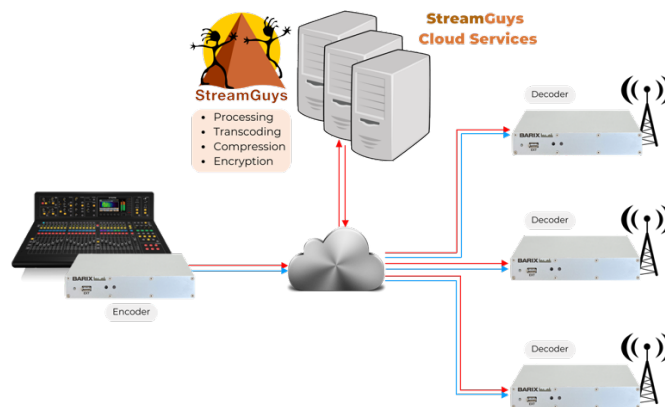
BARIX

LX400 FLEXA Codec

Barix Broadcast Codec featuring various application scenarios, with high level audio in/out and closure interfaces. Supports both RTP streaming with fixed end-to-end delay as well as icecast NeverStop(TM) constant buffer playback.



Introducing the LX400, the latest Barix Broadcast Codec with advanced features for cost effective, quality audio delivery. Key features include support for OPUS, AACplus and PCM uncompressed transmission, absolute end-to-end delay control (RTP), latest security (HTTPS) and data redundancy modes for uninterrupted broadcasting. Power redundancy via 24 VDC and PoE. It works seamlessly with the REFLECTOR EVO service for easy configuration and monitoring. LX400 codec is the latest addition to the ultra reliable and cost effective Barix family of broadcast products.



Applications

- STL and Studio Studio linking
- Broadcast signal distribution
- icecast receiver with controlled delay and NeverStop(TM) streaming playback
- Live IP Audio Encoder for Streaming Applications
- Reliable, fixed-delay, point-to-point or multipoint streaming (Contribution, Syndication, STL)

Features

- Highly efficient, high quality OPUS compression or AACplus, MP3 also supported for legacy sources
- Uncompressed PCM streaming
- Guaranteed end-to-end audio delay (RTP)
- RTP transmission redundancy
- Studiohub in/out and AES3 output
- 8x closure output, send in sync with audio stream or status function
- No need for fixed IP addresses with Reflector EVO
- Easy to configure
- 8x Contact input (for in-sync delivery or streaming control)
- 8x Relay output
- RS-232 for Metadata output (v2)
- Power over Ethernet (PoE) and 24VDC power
- SNMP support (v2)

Technical Specifications

Closures (NO relay outputs and dry contact inputs) on DB-25 connector

Power supply

- 802.3af PoE on RJ-45 connector
- 24 VDC nominal, 12 Watt max. on terminal block

Ethernet

- 10/100Mbps auto rate, full/half duplex
- RJ-45 connector with integrated Link/Activity
- 802.3af PoE support
- Second 10/100 Ethernet port for future software support

Analog Audio Interfaces

- Balanced Audio input and output, Stereo, on separate Studiohub (RJ45) connectors
- Differential input, 18kOhm input impedance
- Software Switchable level/sensitivity (+6dbu/+24dbu)
- Frequency response (-1dB) 20..20'000 Hz**
- Signal to Noise Ratio 87dB, THD 0.01%
- Stereo crosstalk -88 dB
- Input and output level software controllable

Digital Audio Interface

- AES3 on Studiohub (output only)

External

- USB connector type A female

RS-232

- For serial metadata gateway or custom functions

Contact input

- 8 discrete / dry contact input

Relay

- 8 relay contacts, 24V 0.5A, normally open

Mechanical

- Aluminum case, 620g
- Dimensions 216 x 38 x 125 mm (8.5 x 1.5 x 4.92" inch)
- rack and wall mountable using optional accessories

Supported Audio formats

- OPUS
- PCM
- AACplus

** depends on used codec, best results @48kHz PCM

Environmental

Operating Environment

0 to +50°C / 32 to 122°F
0 - 70% relative humidity, non-condensing

Storage Conditions

-20 to +70°C / -4 to 158°F
0 - 70% relative humidity, non-condensing

Certifications

CE, RoHS, FCC

Ordering Information

2023.9376P LX400 Flexa



For commercial related questions (distributors contacts, price list, business opportunities) please contact: sales@barix.com



For technical inquiries (problem reports, request for documentation, etc.) please contact: support@barix.com

Barix AG

Limmatstrasse 21, 8005 Zürich, Switzerland
Phone: +41 434 33 22 11
www.barix.com



Direct Link