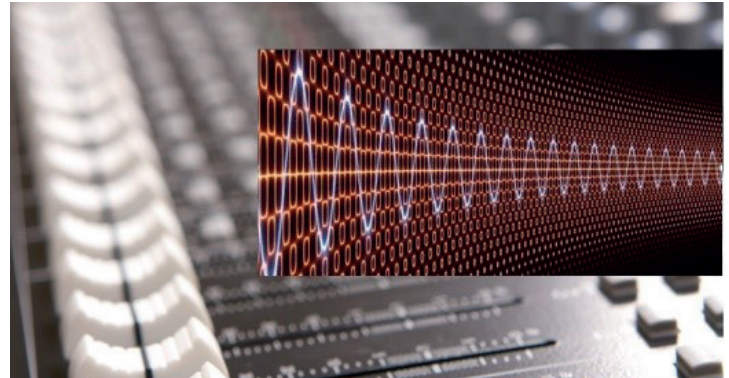


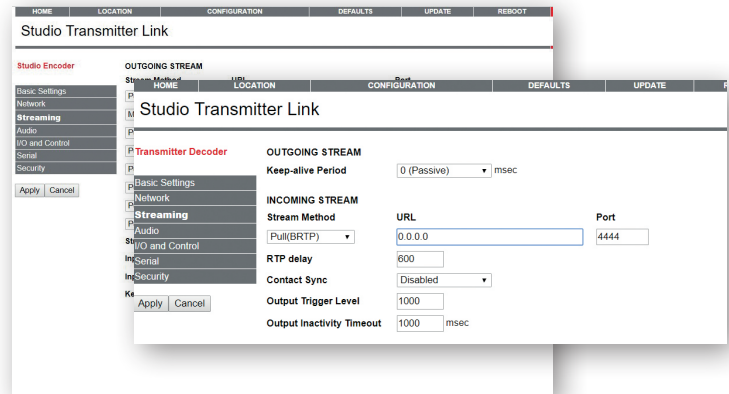
- + Studio Transmitter Link (STL)
- + Studio to Studio link for live interviews
- + Syndicated radio distribution
- + Remote broadcasting



Studio Transmitter Link

Studio Transmitter Link application is the fast and reliable STL solution from Barix to stream audio in full duplex PCM and half-duplex MP3 from a broadcast studio to a transmitter in a remote location. RTP over UDP protocol guarantees a low latency and good reliability of the audio stream at the same time. The application can stream to upto eight unicast or multicast destinations or can send in broadcast mode.

Several administration tools like keep alive handshake, contact closure tunneling, SNMP traps, serial gateway, multicast and DNS are supported. The optional Reflector service helps installing the connection over internet when no fix external IP address is available. STL application is a very powerful and flexible tool for professional radio distribution.



FEATURES:

- + WEB based, "easy to use" configuration
- + Audio formats include G.711 (μ /A-law) 8kHz/24kHz mono, over PCM 8kHz mono up to PCM 48kHz stereo and MP3
- + Failover playback from USB on stream loss
- + Full duplex capable (encoding/decoding)
- + Configurable streaming mode: stream on level, stream on contact, stream always
- + Configurable RTP delay on the decoder side
- + Configurable input source, input gain and output level
- + Configurable device relay's working mode
- + Configurable SNMP or/and SMTP (e-mail) messaging service
- + Configurable COM ports for TCP or UDP based serial gateways
- + Configurable security settings
- + Unidirectional studio-transmitter link can pass firewalls using BRTP protocol
- + Quality of Service (QoS) and (DSCP)
- + fading effect for new connections
- + customizable with BCL
- + Local and Remote stream and I/O status reporting

Preloaded on:
Extreamer 500

Works on:
Annunicom PS1
Annunicom PS16
Annunicom 60
Annunicom 1xx
Annunicom 200
Annunicom 1000
Extreamer 1xx (decoder only)
Extreamer 2xx (decoder only)
Extreamer P5 (decoder only)
Instreamer (decoder only)

