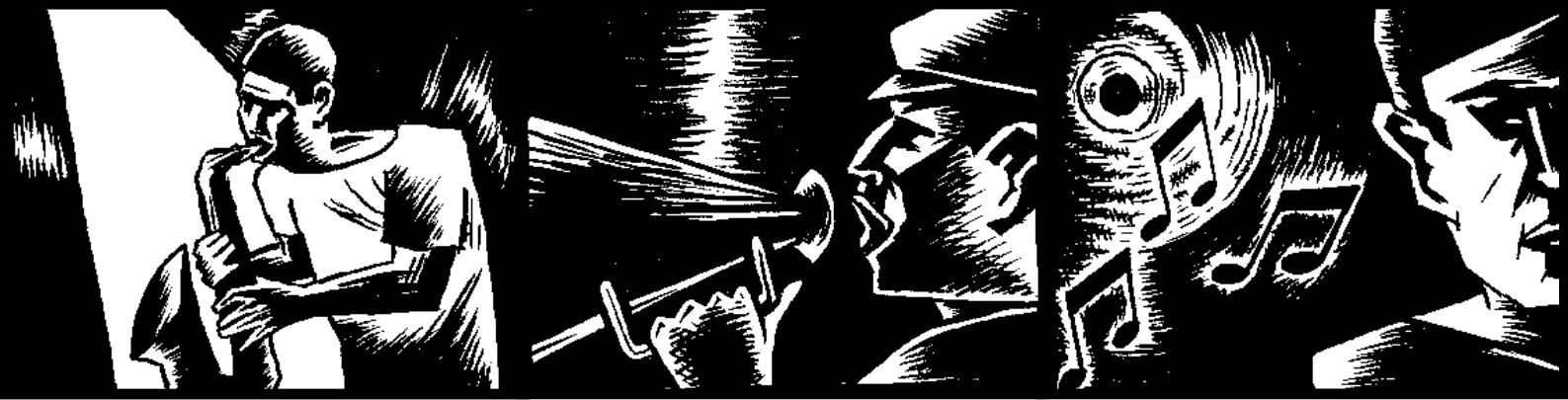


# EXSTREAMER<sup>®</sup>



## EXSTREAMER EXSTREAMER WIRELESS

Network audio player  
for digital audio streaming in  
custom home installations  
and commercial applications

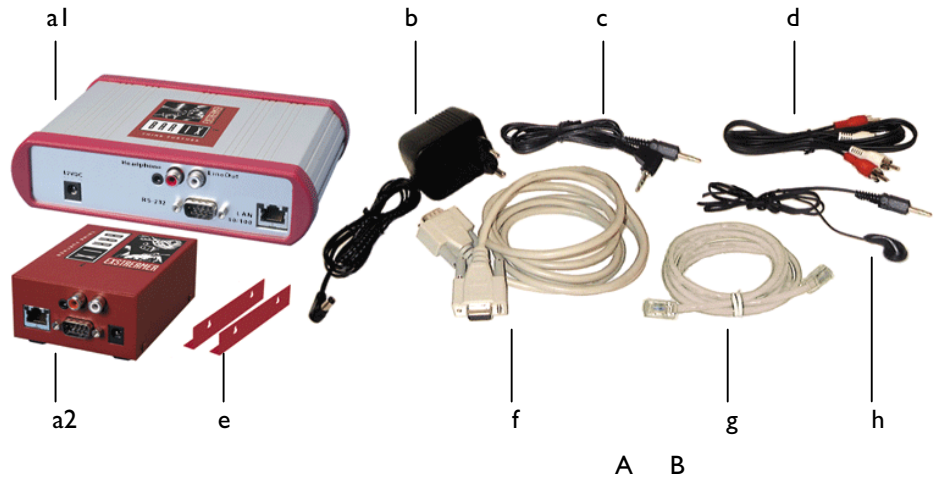


**Quick Install Guide Version 2.0**

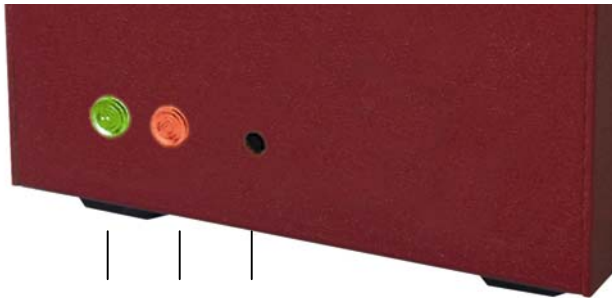
**For Firmware V6.x and higher**

## Package content

- a1 Exstreamer Wireless or
- a2 Exstreamer
- b Power supply
- c 3.5 mm Jack cable
- d RCA stereo cable
- e Mounting brackets (not included in Exstreamer wireless)
- f Serial cable
- g Network cable
- h Earphone



1 2 3 4



1 2 3

- 1 Green LED for status display
- 2 Red LED for status display
- 3 Reset button  
Press this button shortly, using a paper clip, to reset the device. If you press it until the red light flashes (about 5 seconds) the device will be reset to factory defaults.
- 4 PC Card slot for Wireless card



E A B D C



- A Headphone out
- B Stereo RCA line output
- C RJ45 for LAN 10/100 Half/Full duplex
- D DSub9 male, Serial port (RS-232)
- E Power in

## Installation

### STEP 1

Plug the included network cable (g) into the network port (C) of the Exstreamer and the other end into your hub or switch. You can also use a crossover network cable (not included) for a direct connection to your PC.

### STEP 2

Plug the included earphone (h) into the headphone output (A) and put it in your ear. Get the pen and paper ready to write down the IP address that will be announced in step 4.

### STEP 3

Plug the power supply (b) into the power jack (E) of the device and the other end into the power outlet of the wall.

### STEP 4

The Exstreamer will now search for a DHCP server to get an IP address and announce this address over the

earphone. Example: 192.168.0.12 (Voice: one nine two...) Make sure you write this IP address down.

If no DHCP server is found then our IPzator function will search the network for a free IP address (this could take up to 5 minutes). If the IP address is not announced check if the yellow LED (right LED on top of network port C) is lit. If it stays dark check your network cabling. If the front LEDs (1 and 2) stay dark check the power cabling (step 3).

If it still fails revert the device to factory defaults by pressing the Reset button for about 5 seconds while the Exstreamer is powered.

Your Exstreamer is now ready to start working. We recommend, however, that you set a Static IP address. See next pages on how to do this or download the user manual from [www.barix.com](http://www.barix.com).

# Network configuration by web browser

## STEP 1

Open your web browser.

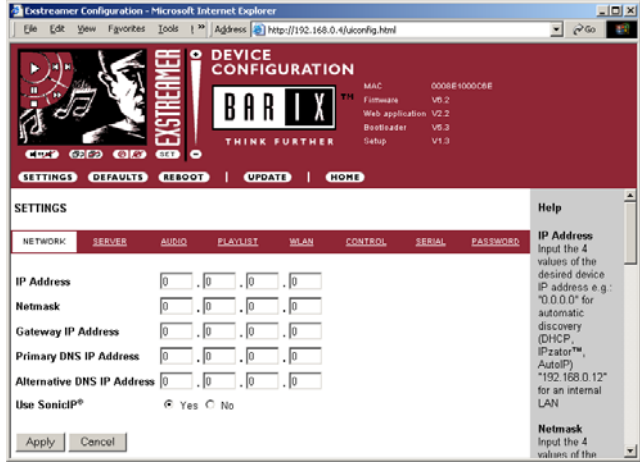
## STEP 2

Enter the IP address of the Exstreamer and press Enter.

Example: 192.168.0.12

## STEP 3

Click on the Config link: 



## STEP 4

Enter an IP address into the 4 IP address fields. At default it is 0.0.0.0 for automatic. You can use the address that was announced by the Exstreamer.

## STEP 6

In normal operating conditions leave the Netmask as is.

## STEP 5

The Gateway, primary and alternative DNS IP addresses as well as Sonic IP can be left at default for now.

## STEP 7

Hit the Apply button to save all changes. The Exstreamer will reboot with the Static IP address.

Please continue with section “Next steps” on last page.

# Network configuration using supplied serial cable

## STEP 1

Open a Terminal program.

## STEP 2

Go to the settings menu of the terminal program and adjust the following settings:  
Baud rate 9600 bit/sec, 8 Data Bits, no Parity, 1 Stop Bit

## STEP 3

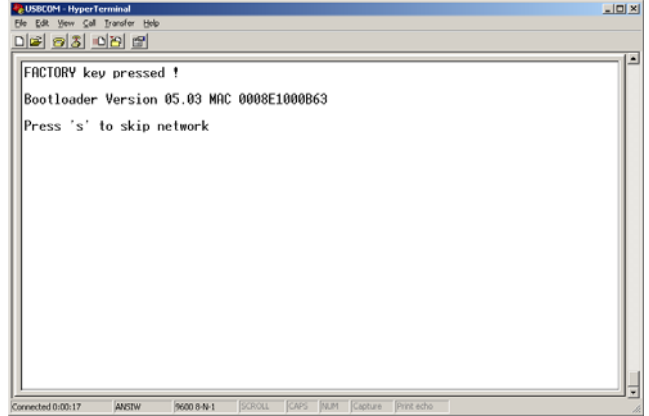
Unplug the power supply of the Exstreamer.

## STEP 4

Connect the supplied serial cable to your PC's COM port and to the serial port of the Exstreamer.

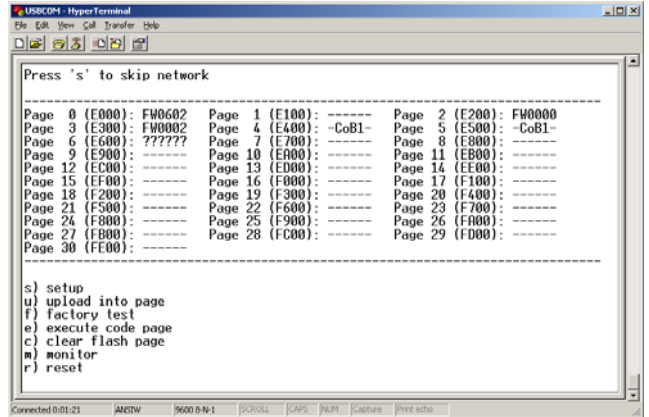
## STEP 5

Keep the Reset button pushed and plug in the power supply. Release the Reset button as soon as you see the following screen:



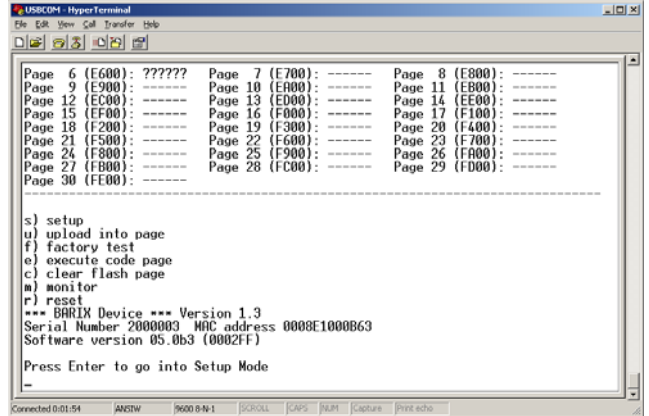
## STEP 6

Hit <S> to skip network discovery if not connected to a network and the following screen appears:



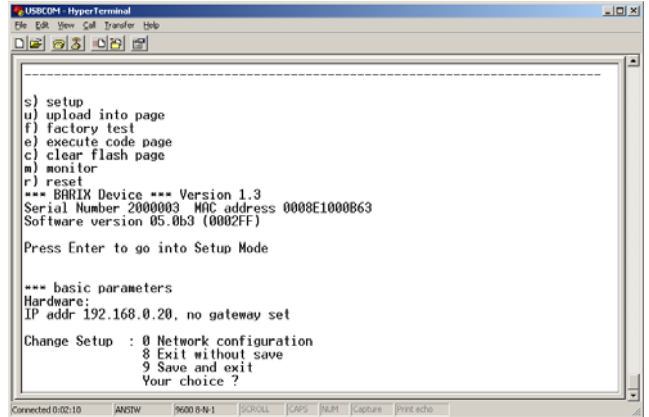
## STEP 7

Hit <S> to get to the Exstreamer setup.



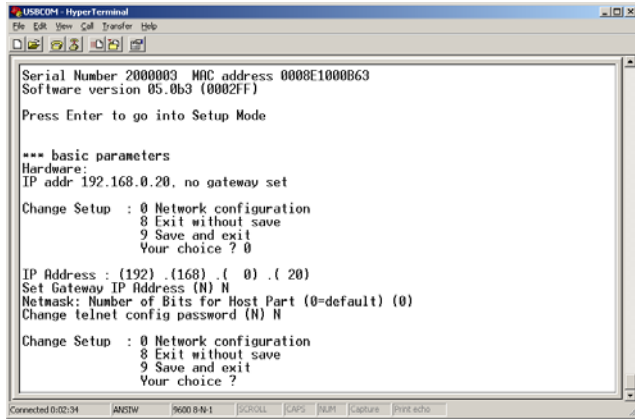
## STEP 8

Hit <enter> to enter the Exstreamer setup mode.



**STEP 9**

Type in <0> and hit <enter> to enter the Network configuration. Enter all requested values:



**STEP 10**

Type in <9> and hit <enter> to save the Network configuration.

Please continue with section "Next steps".

**Network configuration using telnet**

**STEP 1**

Unplug the power supply of the Exstreamer.

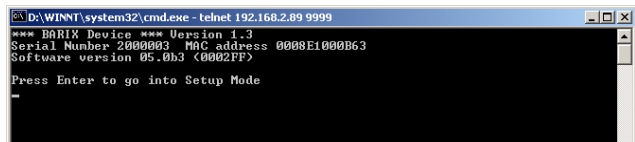
**STEP 2**

Keep the Reset button pushed and plug in the power supply. Release the Reset button after 5 seconds.

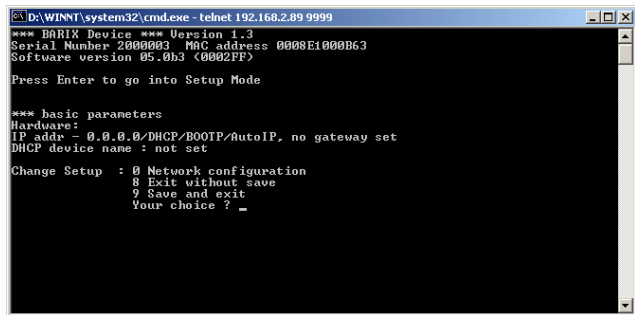
**STEP 3**

Run a command session. Type telnet in the run window with the IP address announced by Sonic IP on port 9999. Example: telnet 192.168.0.12 9999

You will see the following screen:



Hit <enter> to access the Exstreamer in the setup mode.



**STEP 9**

Type in <0> and hit <enter> to enter the Network configuration. Enter all requested values.

**STEP 10**

Type in <9> and hit <enter> to save the Network configuration.

**Next steps**

**STEP 1**

Download the user manual from [www.barix.com](http://www.barix.com).

**STEP 2**

Check the section "Updating the device".

**STEP 3**

Check the section "IR Remote control" on how to install the IR serial receiver.

**STEP 4**

Check out the Barix user forum on [www.barix.com](http://www.barix.com) for additional information.

**Support**

For support please contact your local dealer or visit [www.barix.com](http://www.barix.com).

© 2004 Barix AG, Zürich, Switzerland.

All rights reserved.

All information is subject to change without notice.

All mentioned trademarks are belonging to their respective owners and are used for reference only.

Barix, Exstreamer, SonicIP and IPzator are trademarks or registered trademarks of Barix AG, Switzerland in certain legislations.

For information about our devices and the latest version of this quick install guide please visit [www.barix.com](http://www.barix.com).

**Barix AG**

Seefeldstrasse 303

8008 Zürich

SWITZERLAND

[www.barix.com](http://www.barix.com)