



EXSTREAMER

P5

Quick Install Guide Version 1.1

Universal, Multiformat IP Audio Decoder with Amplifier, PoE powered

Package contents

- a Exstreamer P5
- b Screw block terminal connector (2 pin) for speaker
- c Quick install guide

Firmware

This device comes preloaded with the Streaming Client firmware. Alternative firmware, such as the iClient ABCL application, can be downloaded from www.barix.com.

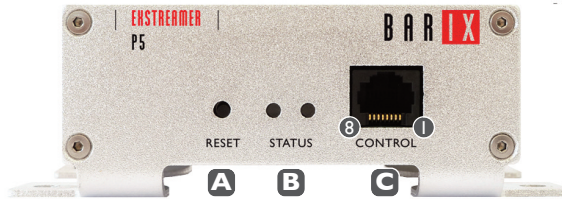
Support

For support please contact your local dealer or visit www.barix.com.

© Barix AG 12/2010, all rights reserved. All information is subject to change without notice. All mentioned trademarks belong to their respective owners and are used for reference only. Barix, Exstreamer and SonicIP are trademarks of Barix AG, Switzerland, and are registered in certain countries.



Front view



A Reset button

A brief press of the button will reset the device. Holding the reset button pressed in for approximately 10 seconds will reset the device and restore the factory default settings when the button is released.

B Status LEDs

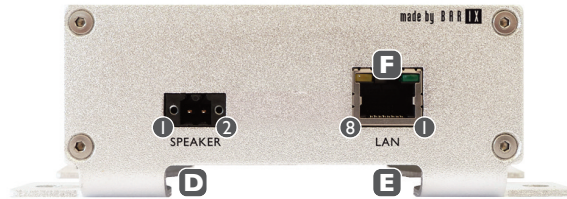
Green and red LEDs for status display

C Control interface (RJ45)

Compatible with VSC Volume Source Control unit.

Pin	Description
1	Not connected
2	Not connected
3	Ground [GND]
4	RS-485 B
5	RS-485 A
6	IR signal input
7	Ground [GND]
8	V+ 10V, 100mA max

Rear view



D Speaker (plug b)

Pin	Description
1	Speaker -
2	Speaker +

E Ethernet port 10/100 & PoE (RJ45)

Standard RJ45 Ethernet socket with PoE power (802.3af) input

F Ethernet Status LEDs

Green LED for Link status.
Yellow LED for Activity status.

I Installation

STEP 1

- i) Wire your speaker to the speaker plug (b), plug it into the speaker output (D).
- ii) If you are not yet ready to connect the speaker, you can still configure the Exstreamer. Either download the “Barix Discovery Tool” from www.barix.com for use in Step 4ii) or continue from section 3 on the last page.

STEP 2

Plug a standard (straight) network cable (not included) into the network port (E) of the Exstreamer and the other end into your PoE switch. You can also use a crossover network cable (not included) and a PoE injector for a direct connection to your PC.

STEP 3

- i) The Exstreamer will now acquire an IP address and announce it over the speaker output (if no DHCP server is available this can take up to 5 minutes).
- ii) If you did not connect a speaker, launch the “Barix Discovery Tool” and click the “Get” button to find out which IP address the device has obtained (see picture at the bottom of the page). Make sure that the Ethernet/MAC address matches your device (see label on the bottom of the device).

STEP 4

If you intend to use a VSC Volume Source Control unit plug a standard (straight) network cable (not included) into the contrl port (C) of the Exstreamer and the other end into your VSC unit.

Now that you know the IP address proceed to section “2 Network configuration by web browser”.

If you were not able to obtain the device’s current IP address with the previous steps see section “4 Troubleshooting”.

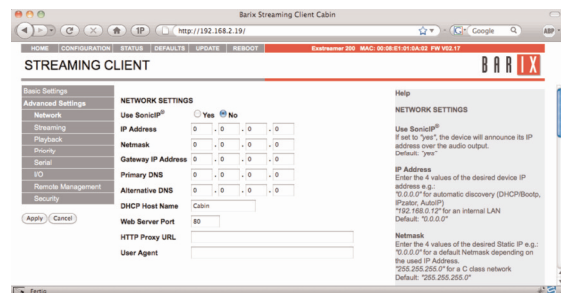
2 Network configuration by web browser

STEP 1

Open your web browser.

STEP 2

Enter the IP address that was announced by the Exstreamer and press Enter. Example: 192.168.0.12
In the top menu click on the “Configuration” button. In the left menu click on “Advanced Settings”.



STEP 3

Enter the static IP address into the IP address field. The default is “0.0.0.0” for automatic discovery (DHCP).

If you know the values for the other fields enter them, otherwise leave them at default (“0.0.0.0”).

Hit the “Apply” button to save all changes. The device will reboot with the configured IP address.

STEP 4

Download the firmware documentation (e.g. Streaming Client Manual) from www.barix.com and use it to complete the installation.

For information about our products, manuals, technical documentation, latest firmware, support and access to the user forum please visit www.barix.com.

Set reply	Ethernet address	IP address	HW type	Product ID	FW version	DHCP name
	00-08-e1-01-44-fc	192.168.11.242	Annunicom 155	annunicom	Va3.08	
	00-08-e1-00-e2-16	192.168.11.239	Exstreamer P5	streaming client	Vb2.18	
	00-08-e1-01-14-f0	192.168.11.205	Exstreamer 110	abcl	Va0.33	
	00-08-e1-01-50-44	192.168.11.223	Exstreamer 100	abcl	Va0.25	

Device selected: Get Set Clear Web Browser

3 Setting temporary IP address using ARP command

This procedure will work only in a local network. After this procedure the temporary IP will be active only until restart/reboot. After a restart the procedure has to be repeated.

STEP 1

Either use a network cable to link the Exstreamer and the PC directly, or connect the Exstreamer to the PC via your network switch and power the device. Make sure that you have a valid static IP address configured on your PC (e.g. 192.168.0.2)

STEP 2

Windows : For a command window. click on "Start", click on "Run..", in the "Open" field type **cmd** , click on "OK".
OSX / Linux : Open a terminal window.

STEP 3

Please proceed to step 4 if you linked the PC directly to the device in step 1.

To ensure that you use a free IP address (not already used by another device in the network) please use the Ping command. To verify availability in this example we assume the PC to have the IP address "192.168.0.2" and want to check if "192.168.0.6" is free.

Type **ping 192.168.0.6** and hit the "Enter" key. You should get no reply which gives you reasonable assertion that the "pinged" IP is available.

STEP 4

Look for the Exstreamer's MAC address printed on a label on the bottom of the device (12 hex digits, separated by a hyphen every 2 digits).

Type into the windows command window

```
arp -s 192.168.0.6 00-08-E1-00-B1-77
```

or on a OSX or Linux system type into the terminal

```
arp -s 192.168.0.6 00:08:E1:00:B1:77
```

and hit the "Enter" key (replace the digits according to your devices MAC address). You must have administrative rights to be able to do so (sudo on OSX / Linux).

STEP 5

Now we have to make the Exstreamer listen to the IP address "192.168.0.6" using the Telnet command.

To do so type into the command window

```
telnet 192.168.0.6 1 and hit the "Enter" key
```

(the number "one" must be there for this command to work correctly !!!). The Exstreamer will immediately

refuse the connection on port 1, but will be available for browser access as long as the device stays powered.

STEP 6

To check if the Exstreamer is responding you can use the ping command again. To do so type

```
ping 192.168.0.6 and hit the "Enter" key.
```

If you do get a reply the IP address 192.168.0.6 can be used to access the Exstreamer using a web browser. Please go back to section "2 Network configuration by web browser" to configure a static IP address.

If you do get "request timed out" then please repeat step 5 carefully (you most likely mistyped the telnet command) or repeat the entire procedure.

If the ARP method does not work for you, refer to the user manual for further methods.

4 Troubleshooting

- If the status LEDs (B) stay dark check the PoE power cabling (installation step 1).
- Check if the green LINK LED (F) is lit, if it is not then check your network cabling (network port E).

Note: Acquiring an IP address can take up to 5 minutes.

For information about our products, manuals, technical documentation, latest firmware, support and access to the user forum please visit www.barix.com.

Barix AG
Seefeldstrasse 303
8008 Zürich
SWITZERLAND