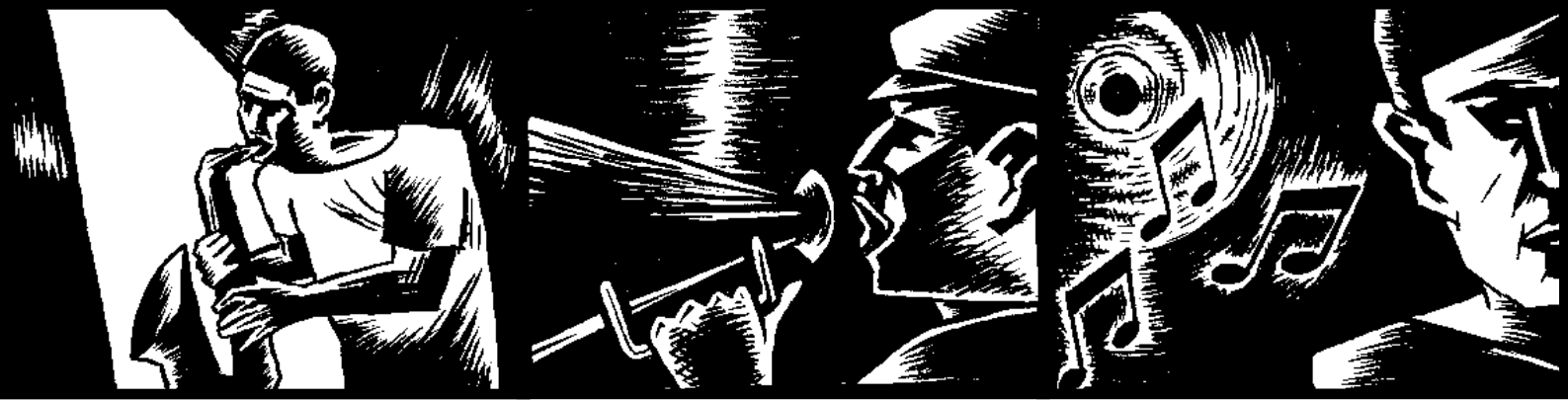


EXSTREAMER[®]



EXSTREAMER GOLD

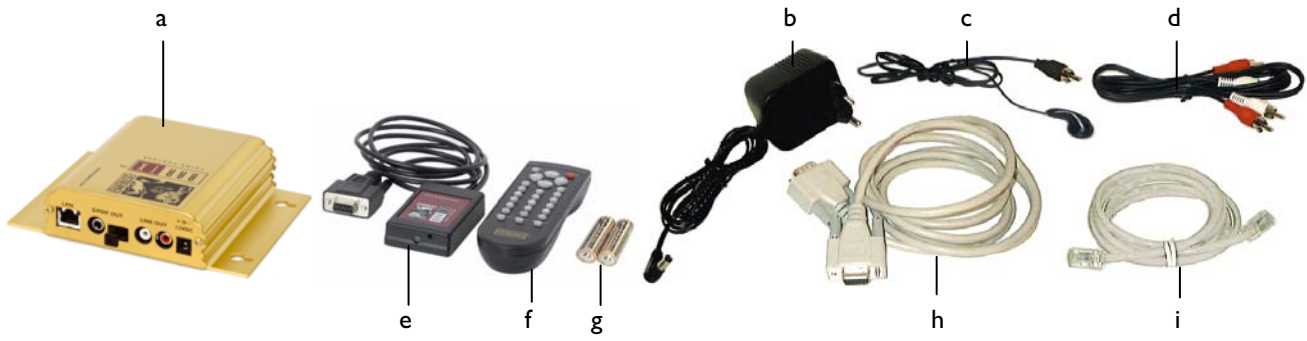
Network amplified audio player
for digital audio streaming for
custom home installations
and commercial applications



Quick Install Guide V 01.00

For Firmware V06.03 and higher

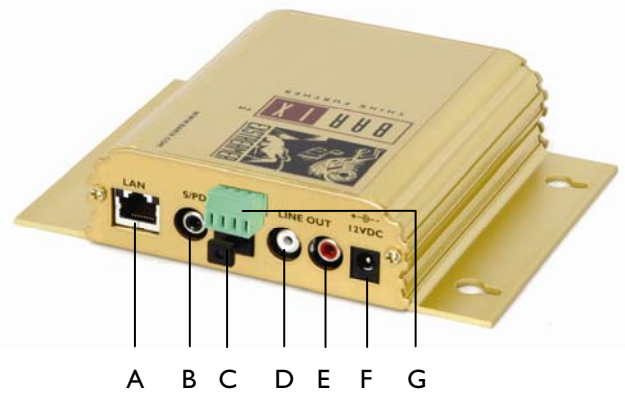
Package content



- | | | | | | |
|---|--------------------|---|--------------------|---|--------------------|
| a | Exstreamer Digital | d | RCA stereo cable | g | Batteries |
| b | Power supply | e | Serial IR Receiver | h | Serial cross cable |
| c | Earphone | f | IR remote control | i | Network cable |



- 1 DSub9 male, Serial port (RS-232)
- 2 IR IN for Infrared-Receiver
- 3 IR OUT for Infrared-Transmitter
- 4 Red and green LED for status display
- 5 Reset button
Press this button shortly to reset the device. If you press it until the red light flashes (about 5 seconds) the device will be reset to factory defaults.



- A RJ45 for LAN 10/100 Half/Full duplex
- B S/PDIF Coaxial digital OUT
- C S/PDIF Optical digital OUT
- D White RCA for left line output
- E Red RCA for right line output
- F Power in
- G Speaker left +, left -, right -, right +

Installation

STEP 1

Plug the included network cable (i) into the network port (A) of the Exstreamer (a) and the other end into your hub or switch. You can also use a crossover network cable (not included) for a direct connection to your PC.

STEP 2

Plug the included earphone (c) into an RCA output (D or E) and put it in your ear or connect the speaker cables to the Speaker output (G), make sure to get the polarity right. Get the pen and paper ready to write down the IP address that will be announced in step 4.

STEP 3

Plug the power supply (b) into the power jack (F) of the device and the other end into the power outlet of the wall.

STEP 4

The Exstreamer will now search for a DHCP server to get an IP address and announce this address over the

earphone and the speakers if already connected.
Example: 192.168.0.12 (Voice: one nine two...)
Make sure you write this IP address down.

If no DHCP server is found then our IPzator function will search the network for a free IP address (this could take up to 5 minutes). If the IP address is not announced check if the yellow LED (right LED on top of network port A) is lit. If it stays dark check your network cabling. If the front LEDs (4) stay dark check the power cabling (step 3).

If it still fails revert the device to factory defaults by pressing the Reset button for about 5 seconds while the Exstreamer is powered.

Your Exstreamer is now ready to start working. We recommend, however, that you set a Static IP address. See next pages on how to do this or download the user manual from www.barix.com.

Network configuration by web browser

STEP 1

Open your web browser.

STEP 2

Enter the IP address of the Exstreamer and press Enter.

Example: 192.168.0.12

STEP 3

Click on the Configuration button.



STEP 4

Enter an IP address into the 4 IP address fields. At default it is 0.0.0.0 for automatic. You can use the address that was announced by the Exstreamer.

STEP 6

In normal operating conditions leave the Netmask as is.

STEP 5

The Gateway, primary and alternative DNS IP addresses as well as Sonic IP can be left at default for now.

STEP 7

Hit the Apply button to save all changes. The Exstreamer will reboot with the Static IP address.

Please continue with section "Next steps" on last page.

Network configuration using supplied serial cable

STEP 1

Open a Terminal program.

STEP 2

Go to the settings menu and adjust the following settings: Baud rate 9600 bit/sec, 8 Data Bits, no Parity and 1 Stop Bit.

STEP 3

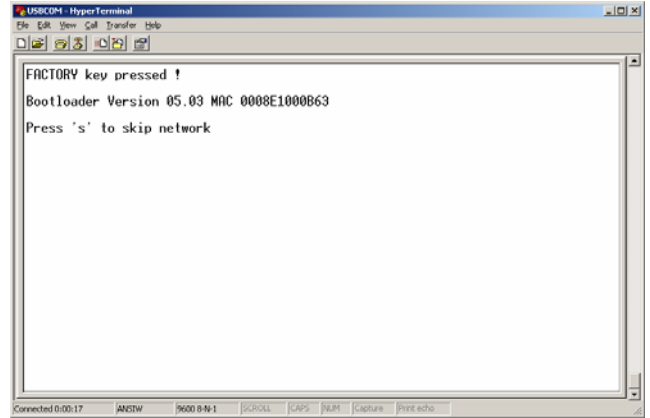
Unplug the power supply of the Exstreamer.

STEP 4

Connect the supplied serial cable to your PC's COM port and to the serial port of the Exstreamer.

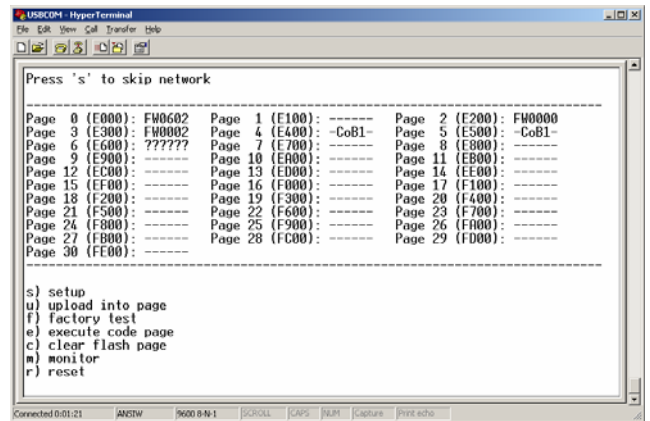
STEP 5

Keep the Reset button pushed and plug in the power supply. Release the Reset button as soon as you see the following screen:



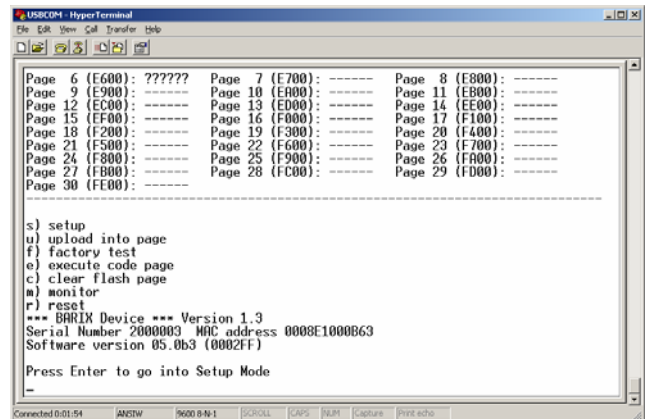
STEP 6

Hit <s> to skip network discovery if not connected to a network and the following screen appears:



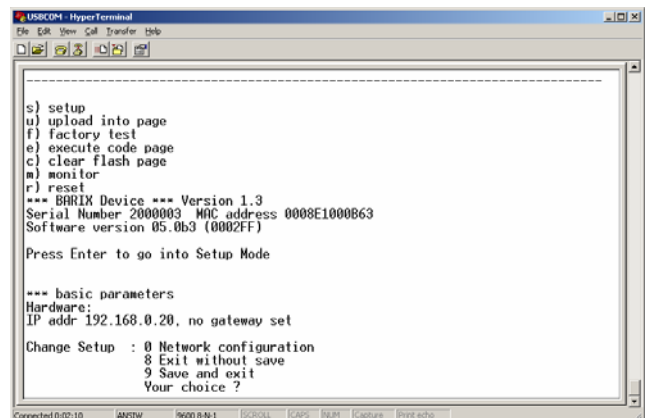
STEP 7

Hit <s> to get to the Exstreamer setup.



STEP 8

Hit <enter> to enter the Exstreamer setup mode.



STEP 9

Type in <0> and hit <enter> to enter the Network configuration. Enter all requested values:

STEP 10

Type in <9> and hit <enter> to save the Network configuration.

Please continue with section “Next steps”.

Network configuration using telnet

STEP 1

Unplug the power supply of the Exstreamer.

STEP 2

Keep the Reset button pushed and plug in the power supply. Release the Reset button after 5 seconds.

STEP 3

Run a command session. Type telnet in the run window with the IP address announced by Sonic IP on port 9999. Example: *telnet 192.168.0.12 9999*

You will see the following screen:

Hit <enter> to access the Exstreamer in the setup mode.

STEP 9

Type in <0> and hit <enter> to enter the Network configuration. Enter all requested values.

STEP 10

Type in <9> and hit <enter> to save the Network configuration.

Please continue with section “Next steps”.

Next steps

STEP 1

Download the user manual from www.barix.com.

STEP 2

Check the section “Updating the device”.

STEP 3

Check the section “IR Remote control” on how to install the IR serial receiver.

STEP 4

Check out the Barix user forum on www.barix.com for additional information.

Support

For support please contact your local dealer or visit www.barix.com.

© 2004 Barix AG, Zürich, Switzerland.

All rights reserved.

All information is subject to change without notice.

All mentioned trademarks are belonging to their respective owners and are used for reference only.

Barix, Exstreamer, SonicIP and IPzator are trademarks of Barix AG, Switzerland and are registered in certain countries.

For information about our devices and the latest version of this quick install guide please visit www.barix.com.

Barix AG

Seefeldstrasse 303

8008 Zürich

SWITZERLAND

www.barix.com