



# EXSTREAMER 500



## Quick Install Guide Version 1.0

### Professional multiformat network audio encoder/decoder

#### Package contents

- a Exstreamer 500
- b Power supply
- c Y-Cable Analog (DSub9 M to 2 x XLR M & 2 x XLR F)
- d Connector set (screw terminal blocks: 2 x 6 pin, 4 pin)
- e Self-adhesive rubber feet
- f Quick Install Guide

#### Support

For support please contact your local dealer or visit [www.barix.com](http://www.barix.com).

© Barix AG 7/2010, all rights reserved. All information is subject to change without notice. All mentioned trademarks belong to their respective owners and are used for reference only. Barix, Exstreamer and SonicIP are trademarks of Barix AG, Switzerland, and are registered in certain countries.



## Front view



1 2 3 4

### 1 Reset button

A brief press of the button will reset the device. Holding the reset button pressed in for approximately 10 seconds will reset the device and restore the factory default settings when the button is released.

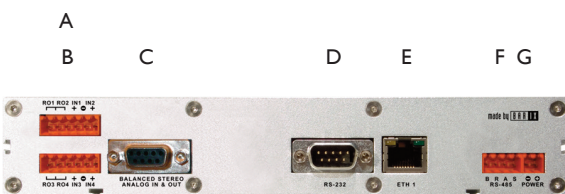
### 2 EXT.

Interface for USB flash memory (not supplied)

### 3 Green and red LEDs for device status display

### 4 Green LEDs (1...4) for I/O status display

## Rear view



### A I/O 1&2 (6 pin screw terminal block plug)

Pin	Description
1	Output Relay 1
2	Common Relay 1&2
3	Output Relay 2
4	Input 1
5	Ground (-) Input 1&2
6	Input 2

### B I/O 3&4 (6 pin screw terminal block plug)

Pin	Description
1	Output Relay 3
2	Common Relay 3&4
3	Output Relay 4
4	Input 3
5	Ground (-) Input 3&4
6	Input 4

### C Analog audio In & Out (DSub 9 pin female)

Pin	Description
1	Left Out+ [Hot]
2	Left Out- [Cold]
3	Ground [G]
4	Right In+ [Hot]
5	Right In- [Cold]
6	Right Out+ [Hot]
7	Right Out- [Cold]
8	Left In+ [Hot]
9	Left In- [Cold]

### D RS-232 serial port (DSub 9 pin male)

Pin	Description
1	Not connected
2	Receive Data [RxD]
3	Transmit Data [TxD]
4	V+ 14.6V, 100mA max
5	Ground [GND]
6	Not connected
7	Ready to Send [RTS]
8	Clear to Send [CTS]
9	Not connected

### E LAN port 10/100 (RJ45)

### F RS-485 bus (4 pin screw terminal block plug)

Pin	Description
1	485 B
2	Reference *
3	485 A
4	Shield

\*The reference pin is connected via 100 Ohm to the internal ground.

### G Power (4 pin screw terminal block plug)

Pin	Description
1	Vin -
2	Vin+ 24..48VDC $\pm$ 20%

# I Installation

## STEP 1

Plug a standard (straight) network cable into the network port (E) of the Exstreamer and the other end into your hub or switch. You can also use a crossover network cable for a direct connection to your PC.

## STEP 2

i) If you are ready to connect to audio equipment: Plug the Y-Cable Analog (c) into the Analog audio In & Out socket (C) and connect an XLR cable (not included) from the male XLR (output) to an input of your mixing console or monitoring device in order to hear the announcement in Step 4i).

ii) If you are not yet ready to connect the device in to your audio equipment, you can still configure the Exstreamer. Either download the “Barix Discovery Tool” for use in Step 4ii) or continue with section 3 on the last page.

## STEP 3

Connect the Power supply (b) to the device (socket G) and then to an appropriate electrical outlet.

## STEP 4

- i) The Exstreamer will now acquire an IP address and announce it over the audio outputs (if no DHCP server is available this can take up to 5 minutes).
- ii) If you did not connect audio, launch the “Barix Discovery Tool” and click the “Get” button to find out which IP address the device has obtained (see picture at the bottom of the page). Make sure that the Ethernet/MAC address matches your device (see label on the bottom of the device).

Now that you know the IP address proceed to section “2 Network configuration by web browser”.

If you were not able to obtain the device’s current IP address with the previous steps see section “4 Troubleshooting”.

# 2 Network configuration by web browser

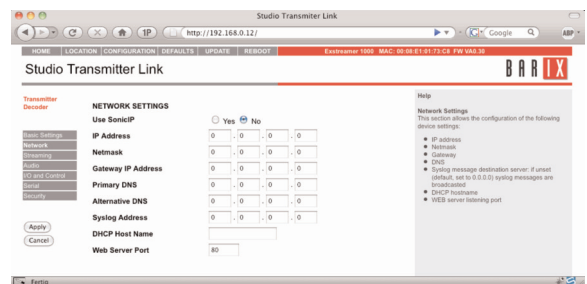
If you need to use static (fixed) network settings follow the steps 1 to 3 otherwise continue at step 4.

## STEP 1

Open your web browser.

## STEP 2

Enter the IP address that was announced by the Exstreamer and press Enter. Example: 192.168.0.12  
Click the “CONFIGURATION” button on the top.  
Click the “Network” button on the left to see the following page:



## STEP 3

Enter the static IP address into the IP address field. The default is “0.0.0.0” for automatic discovery (DHCP).

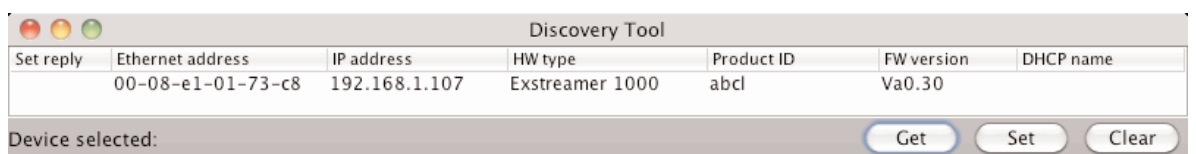
If you know the values for the other fields enter them, otherwise leave them at default (“0.0.0.0”).

Hit the “Apply” button to save all changes. The device will reboot with the configured IP address.

## STEP 4

Download the user manual from [www.barix.com](http://www.barix.com). Read it to continue to configure the Exstreamer for your purpose.

For information about our products, manuals, technical documentation, latest firmware, support and access to the user forum please visit [www.barix.com](http://www.barix.com).



### 3 Setting temporary IP address using the MAC address

This procedure will work only in a local network. After this procedure the temporary IP will be active only until restart/reboot. After a restart the procedure has to be repeated.

#### STEP 1

Either use a “crossover” network cable to link the Exstreamer and the PC or connect the Exstreamer and the PC to a network switch and power the Exstreamer. Make sure that you have a valid static IP address configured on your PC (e.g. 192.168.0.2)

#### STEP 2

Windows : For a command window. click on “Start”, click on “Run..”, in the “Open” field type **cmd** , click on “OK”.  
OSX / Linux : Open a terminal window.

#### STEP 3

Please proceed to step 4 if you used a “crossover” network cable in the preparation step above.

To ensure that you use a free IP address (not already used by another device in the network) please use the Ping command. To verify availability in this example we assume the PC to have the IP address “192.168.0.2” and want to check if “192.168.0.6” is free.

Type **ping 192.168.0.6** and hit the “Enter” key. You should get no reply which gives you reasonable assertion that the “pinged” IP is available.

#### STEP 4

Look for the Exstreamer’s MAC address printed on a label placed on the bottom of the device (12 hex digits, separated by a hyphen every 2 digits).

Type into the windows command window

```
arp -s 192.168.0.6 00-08-E1-00-B1-77
```

or on a OSX or Linux system type into the terminal

```
arp -s 192.168.0.6 00:08:E1:00:B1:77
```

and hit the “Enter” key (replace the digits according to your devices MAC address). You must have administrative rights to be able to do so (sudo on OSX / Linux).

#### STEP 5

Now we have to make the Exstreamer listen to the IP address “192.168.0.6” using the Telnet command.

To do so type into the command window

```
telnet 192.168.0.6 1 and hit the “Enter” key (the number “one” must be there for this command to work correctly !!!). The Exstreamer will immediately
```

refuse the connection on port 1, but will be available for browser access as long as the device stays powered.

#### STEP 6

To check if the Exstreamer is responding you can use the ping command again. To do so type

```
ping 192.168.0.6 and hit the “Enter” key.
```

If you do get a reply the IP address 192.168.0.6 can be used to access the Exstreamer using a web browser. Please go back to section “2 Network configuration by web browser” to configure a static IP address.

If you do get “request timed out” then please repeat step 6 carefully (you most likely mistyped the telnet command) or repeat the entire procedure.

If the ARP method does not work for you, refer to the user manual for further methods.

## 4 Troubleshooting

- If the front LEDs (3) stay dark check the power cabling (installation step 3).
- Check if the green LED (right LED on top of network port E) is lit, if it is not then check your network cabling.
- Revert the device to factory defaults by pressing the Reset button for about 10 seconds while the device is powered (overwrites all settings).

Note: Acquiring an IP address can take up to 5 minutes.

For information about our products, manuals, technical documentation, latest firmware, support and access to the user forum please visit [www.barix.com](http://www.barix.com).

Barix AG  
Seefeldstrasse 303  
8008 Zürich  
SWITZERLAND